

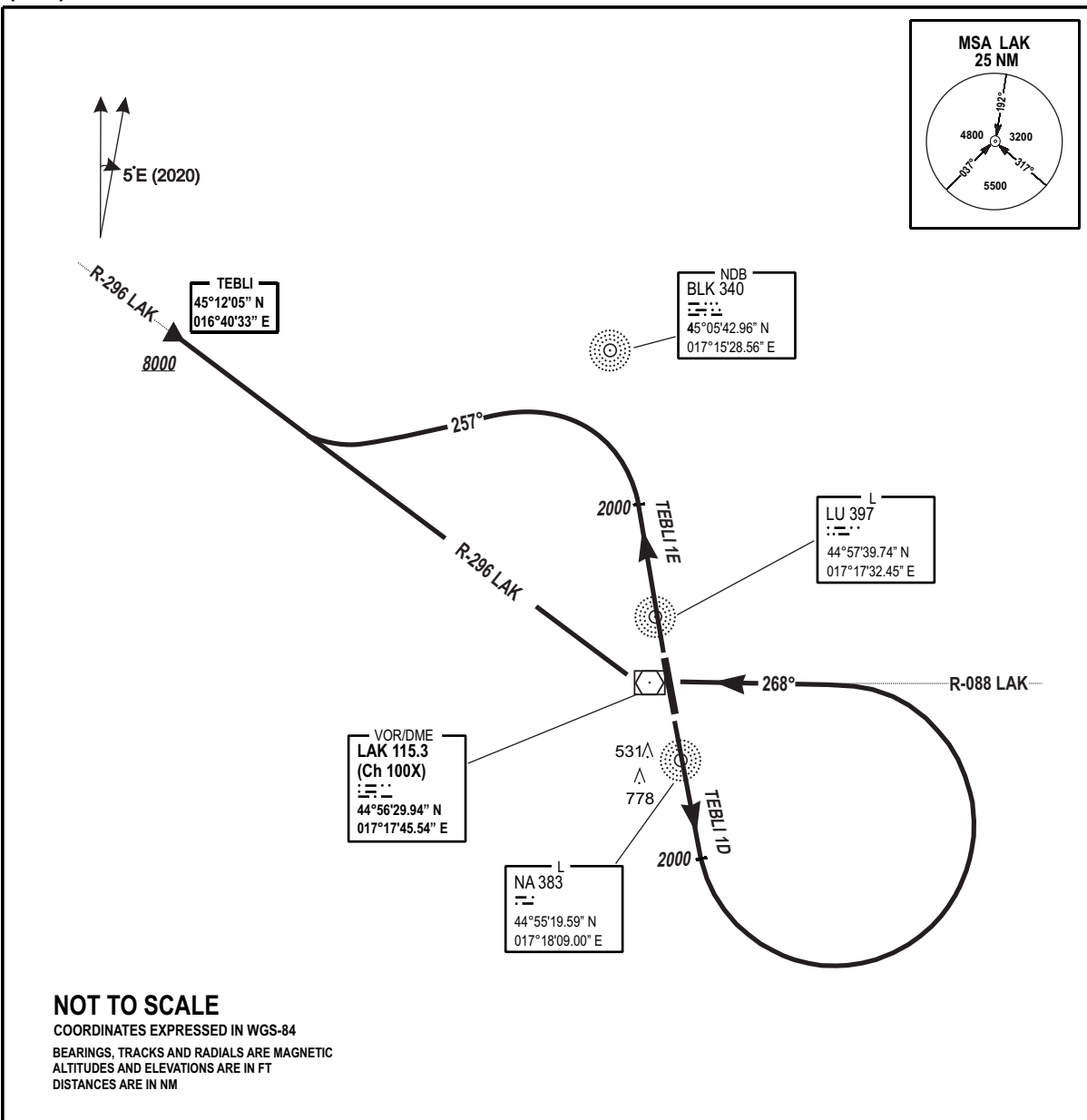
**STANDARD DEPARTURE
CHART INSTRUMENT
(SID) - ICAO**

AD ELEV
401 FT

TRANSITION
ALTITUDE
10 000 FT
VAR 5°E (2020)

TWR/APP 133.075
SPARE 124.175

**BANJA LUKA (LQBK)
TEBLI 1D / TEBLI 1E**



CHG: MAG VAR, MAG BEARINGS & RADIALS, RWY DESIGNATORS, MSA BEARINGS, TEBLI 1C AND 3C RENAMED TO TEBLI 1D AND 1E;

MNM REQUIRED CLIMB RATE (FPM)

RWY	%	80	120	150	180	210	250	To
16	8.5%	690	1040	1300	1550	1810	2160	2500
34	6.8%	550	830	860	1040	1240	1730	2500

SID	ROUTEING (Including MNM Noise Routes)
TEBLI 1D (MAG BRG 165°)	Climb on RWY TR to 2000 FT, then turn left to TR 268° to intercept and follow R-088 to LAK. After LAK VOR/DME, turn right on R-296 LAK to cross TEBLI at or above 2000 FT.
TEBLI 1E (MAG BRG 345°)	Climb on RWY TR to 2000 FT, then turn left to TR 257° to intercept and follow R-296 LAK to cross TEBLI at or above 8000 FT.

THIS PAGE INTENTIONALLY LEFT BLANK